

gjastkiddur Hannes min!

gæmindi að miðrafa á sínu
þum þátt í þessum þorunum
þar sem tilkallurinn er
í búrinn, þá þótti



Annual report 2021

Short version





Annual report 2021

Short version



Frontpage of the exhibition catalog.

An exhibition about Valgerður Jónsdóttir (1771-1856), was opened, on her 250th anniversary. She had two husbands, both bishops. The first was Hannes Jónsson bishop in Skálholt, and the second was Steingrímur Jónsson bishop in Laugarnes. Both husbands collected manuscripts and she as well, and in addition she kept a correspondence book. When Valgerður became a widow, she sold the whole collection to the National Library of Iceland, and it became the foundation for the Manuscript Collection in the year 1846.

National and University Library of Iceland.

ANNUAL REPORT 2021.

ISSN 2298-8785.

Editor: Ingibjörg Steinunn Sverrisdóttir.

Layout: Íslenska auglýsingastofan and Ólafur J. Engilbertsson.

Printing: Háskólaprent.

Cover photo: A letter from Valgerður Jónsdóttir to her son, Lbs 2426

4to, and a costume of Valgerður Jónsdóttir from the National

Museum of Iceland.

Photos: Ólafur J. Engilbertsson and Ingibjörg Steinunn Sverrisdóttir.



Foreword from the National Librarian

The policy of the NATIONAL AND UNIVERSITY LIBRARY OF ICELAND is to be a source of knowledge for everyone. It serves the Icelandic community in all areas of reference and academic discipline and plays a leading role in the collection, preservation, and dissemination of information, thus making a vital contribution to culture, research, and innovation.

After parliament elections in september 2021, a new government was formed with an extensive realignment of government offices. The NULI is now part of the Ministry of Culture and Business Affairs. The National Librarian sent comments about the double role of the Library to the government, and the necessity to have connections in the Ministry of Science, Industry and Innovation was acknowledged. Covid-19 continued to have a considerable impact on the activities in the Library. The operational balance of the year 2021 was negative, due to budget cuts, and the fact that some institutions did not pay their share in the national licences, ICES. FTE's increased by 2,5. Travel, training, and conferences were suspended or cancelled as in 2020.

Maintenance of the library building continued as usual. The parking lot was painted and the Library garden received extra weeding and reparations. Various technical equipments were renewed, and better Internet connections were installed in Reykholt and in Mjódd. Experiments were made with LED bulbs in various parts of the Library building.

The formation of a new strategy for the NULI that started in December 2019 continued, on a slow pace. Equal Pay Certification (compliance to the Equal Pay Standard ÍST 85:2021) continued, also work on step 2 in Green Steps in Government. New policies were accepted, for the use of social media, and for the Libray's websites.

The Library Fund (Bókasafnasjóður) allocated for the first time. NULI was a partner in two projects: Digitization of exhibition catalogs from the National Galleries, and an employee of NULI participates in a survey on the usage of Information Literacy in Libraries. Implementation of the library system Alma and the discovery tool Primo VE continued but was delayed, because of Covid-19. The implementation of the Pure system (Current Research Information System) also continued but was delayed.

The Covid-19 pandemic had a major influence on the operations of the NULI in many ways. The Library building was closed for the public 25th of March - 7th of April or 2 weeks. Like last year the number of patrons in the building was restricted, and when the building was open, it was usually from 9:00 – 17:00, and closed in the evenings and on weekends. The executive committee monitored the situation and discussed it in its weekly meetings. A team of key people from all departments that was formed last year continued to react to changes and spread information to the public. The staff canteen and public cafeteria was open or closed according to current situation. Part of the staff continued remote work and remote meetings became the main communication channel. Emphasis on information services on the Internet continued, and service by email and telephone was reinforced. Patrons could order paper material and fetch and return it at the library service entrance. Usage of e-material and e-services increased. Daily operations changed according to the Covid-19 situation and restrictions concerning number of guests, masks, hygiene, distance etc. Very few of the staff were infected by Covid-19.

Government Policy 2021-23

Operational budget for 2021 was processed according to laws on public finances no. 123/2015 (LOF), in collaboration with the Ministry of Culture and Business Affairs, as well as policy planning for the next three years. The priority tasks of the NULI for the next years fall into the category of 18.1 *Museums*, in the Budget, but also categories 7 *Research, innovation, knowledge* and 21 *Universities*. The goals and projects were revised, as the older ones had been achieved, and some became part of the daily operations. The goals for 2021-2023 are:

Core Activity:

1. Improve access to, and dissemination of culture and arts,
2. Protect the cultural heritage in a more targeted way,
3. Enhancement of research and cataloguing.

Operational Factors:

1. Climate matters,
2. Public service,
3. Human resources.

The progress of these goals is accounted for in the next chapter, but the policy spans three years and will be revised annually.

Core activity

1. Improve access to and dissemination of culture and arts

Emphasis within NULI is now on registration of diverse collections, other than print. It gives better information about the collections, and access on the Internet improves. Cataloging and digitization of manuscripts for the website *handrit.is* continued.

The project *Originals of Icelandic Music* started 2019, when NULI received the whole catalog of diverse recordings from the record company Alda Music. The purpose is to collect, catalog and preserve studio recordings of Icelandic music. The recordings are cataloged by storage and location, and by collection and format. The collections are three, Alda Music (AM), Smekkleysa (SM) and National Library (Lbs). The music is in different formats: TP, MTR, DAT/ADAT and CD. At the end of 2021, the number of catalogued records was 10.379 and the number of units was 24.999. Last year the website of the *Theater* Museum was updated, and an underlying database. All new acquisitions are catalogued as well.

2. Preservation of cultural heritage

The main collections are stored in the National Library building and in 11 other places. Compact shelving and pallet racks were installed in the storage in Mjódd, walls, the floor painted and facilities for the staff improved, as well as security measures. The project was in cooperation with the owner of the premises.

A project of weeding foreign serials in storages of the NULI building started, to make space for Icelandic preservation material. The storages in Reykholt are nearly full, and it has been emphasized that new storages outside of Reykjavík are needed. It was discussed with the Ministry and a memorandum sent to explain the situation. Cataloging of the material in Reykholt into the library system Gegnir, is also in priority, to gain a comprehensive overview of the whole collection. Preservation and weeding will be easier.

3. Enhancement of research and cataloguing

Every year the NULI takes part in several research projects and contributes with data and expertise. In cooperation with the Digital Humanities Centre at the University of Iceland, an application was sent to the Innovative Fund at Rannís in 2020 for a comprehensive catalogue of Icelandic person names, and a grant was awarded for the 1st phase. Another application was sent this year and four projects were awarded:

1. Sarpur - update of cultural historical database.
2. Transkribus – computer reading of handwriting.
3. Historical catalog of place and person names 2.
4. Speech recognition in Ísmús / texts of old Icelandic

The NULI benefitted from all these projects. NULI administers the implementation of a CRIS system (Current Research Information System) that is aimed to preserve information on Icelandic research projects and publications. More than 1000 entries were in the database at the end of the year. The system was acquired 2019 by the Ministry of Education. The process was delayed because of Covid-19, but opening is planned in 2022. The database was named IRIS.

The NULI was partner in two projects that received a grant from the Library Fund at Rannís and took part in the Rannís project *Paper Trails*. Three grants were awarded from the research fund of Haraldur and Sigrún Ástrós Sigurðardóttir.

Operational factors

1. Climate Issues

Good progress was made in Green Step 2, and it was nearly finished by the end of the year. 33 actions out of 40 were finished, but institutions must finish at least 36. The benefit of Green Accounting was explored and nearly finished. More than 30 employees get transport subsidy and use environment friendly transportation. New bicycle racks for guests were installed near the main entrance, also a pump station for the staff.

2. Public Service

Considerable changes were made in records management. New records key was compiled and installed. New cases in the record system, were 371 for the year 2021, which is more than last year. New record keeping period started and a new archiving plan for NULI was accepted by the National Archives. The quality system *easyQuality* was also installed.

3. Human Resources

The project *Better Working Hours* was finished for all staff. A policy for remote working was approved and several contracts were made between the NULI and individuals. Microsoft365 was implemented with considerable changes in the working environment for everybody, and emphasis was on education and training for the staff, both on site and distance learning.

Ingibjörg Steinunn Sverrisdóttir
National librarian

Key statistics

At the end of each year, statistics are processed and published. Several alterations have been made over the years, in line with changed operations. The statistics are presented regarding the standard *International Library Statistics, ISO 2789:2013*. Numbers of the tables match numbers in the standard. Consortium of Icelandic Libraries processes statistics of Library holdings from the library system Gagnir, and more emphasis is on analysis of statistics by gender.

1. UNITS AND BRANCHES

The National and University Library of Iceland serves the Icelandic population, counting 368.792 on January 1st, 2021, but serves all other customers. It is also the library of the University of Iceland with 15.258 enrolled students in autumn 2021.¹ The Library is one administrative unit, but operations and library holdings are on following locations:

The National and University Library, Arngrímsgata 3 in Reykjavík	1
Branches and reading rooms at the University of Iceland	3
Reserve Library in Reykholt in Borgarfjörður	1
Legal deposit in Amtsbókasafnið in Akureyri	1
Storage in Mjódd in Reykjavík	1
Data storage at Verne Global in Keflavík	1
Data cloud at Endor	1
Data cloud at Advania	1
Amazon Web Services - Glacier	1
Total	11

2. SERVICES AND USAGE

Library users include those who visit the Library building and those who use services on its websites. Guests using the Manuscript Department and National Department reading room on 1st floor are counted; precise counts of other users are not feasible, but surveys are made of users of the open areas on other floors in the first week of each month. On weekdays during the university examination season, the number of users can reach up to 300-350 (see table 2.10). A solution from the company Camlytics, for monitoring the number of people in the building was taken in use, for trial. Counting for 2020 and 2021 can not be used because of Covid and reduced opening hours. They will be presented for 2022. Visits and use of websites can be found in table 2.13.

2.2 Registered users

	2018	2019	2020	2021
Students at the University of Iceland ²	11.572	13.194	14.992	14.539
University and library staff	782	786	772	552
Other students	210	112	75	53
Other borrowers	510	364	743	37
Total	13.074	14.093	16.582	15.181

¹ Key figures from the University of Iceland <https://www.hi.is/kynningarefni/nemendur>.

² Information of enrolled students at the University is automatically loaded into the library system Gagnir from the Student Registration. This saves a lot of work and time, but separation of active and inactive student users is not possible.

2.3 Lending services³

	2018	2019	2020	2021
Main Library and reading rooms				
Students at the University of Iceland	19.218	16.024	11.232	10.942
University and library staff	4.711	3.903	3.572	3.335
Other students	950	931	826	548
Other borrowers	4.491	5.757	4.541	4.690
Renewals ⁴	49.410	50.626	43.511	46.187
Total	78.780	77.241	63.682	65.702
National collections - Reading Room	2.855	2.372	1.724	1.991
Manuscript collections - Reading Room	5.602	3.460	2.856	3.312
Lögberg - Branch at law department	4.527	4.200	3.133	2.579
Womens Archives - Reading Room	47	172	88	125
Audio - visual collection				
Sound recordings - loans	25	13	9	7
Films and related materials - loans	262	305	276	243
Digital materials - loans	9	9	3	4
Printed music - loans	55	67	64	85
Sound recordings - used on site ⁵	9	12	501	215
Films and related materials used on site	40	28	24	20
Total	13.431	10.638	8.678	8.581
Total loans	92.211	87.879	72.360	74.283

2.4 Inter-library lending and article services

	2018	2019	2020	2021
To the Library				
Books, films etc.	601	572	399	352
Articles - photocopies	502	431	334	385
From the Library				
Books, films etc.	262	223	179	169
Articles - photocopies	244	252	273	282
Total	1.609	1.478	1.185	1.188
To the Manuscript Collections	4	18	5	29
From the Manuscript Collections	17	70	17	4
Total	21	88	22	33
Total Inter-library loans	1.630	1.566	1.207	1.221

³ Loan numbers are from the website of Landskerfi bókasafna. Loans dropped in 2020 and 2021 because of Covid-19.

⁴ The number of renewals is higher than number of loans.

⁵ Revised counting of sound recordings used on site on 4th floor, in computers etc.

2.5 Reference questions – Enquiries handled

	2018	2019	2020	2021
Reference Services				
E-mail at landsbokasafn@landsbokasafn.is ⁶	293	185	172	131
E-mail - processed inquiries	403	480	547	301
By phone or in person	96	72	67	38
Web chat	165	371	668	402
Quality control in Gegnir	168	228	168	170
Audio-visual Collections	15	9	14	14
The Icelandic Music Collection	15	20	9	46
National Collections	33	40	25	25
Women´s history archive (visits and enquiries)	221	152	131	146
Centre for Oral History	20	19	15	20
Theater Museum				23
Total	1.444	1.700	1.821	1.316

2.6 Printing and photocopying by library users⁷

	2018	2019	2020	2021
Number of pages				
Printed	9.493	4.321	29	3.423
Photocopied	24.365	11.534	11.505	12.662
Scanned	16.265	11.987	11.942	7.602

2.9 Events

	2018	2019	2020	2021
Exhibitions	9	9	10	11
Seminars and lectures	28	20	18	15
Total	32	29	28	26

2.10 Reading room for manuscripts and national collections 1st floor

Guests	2018	2019	2020	2021
Total	3.892	3.444	2.002	2.811

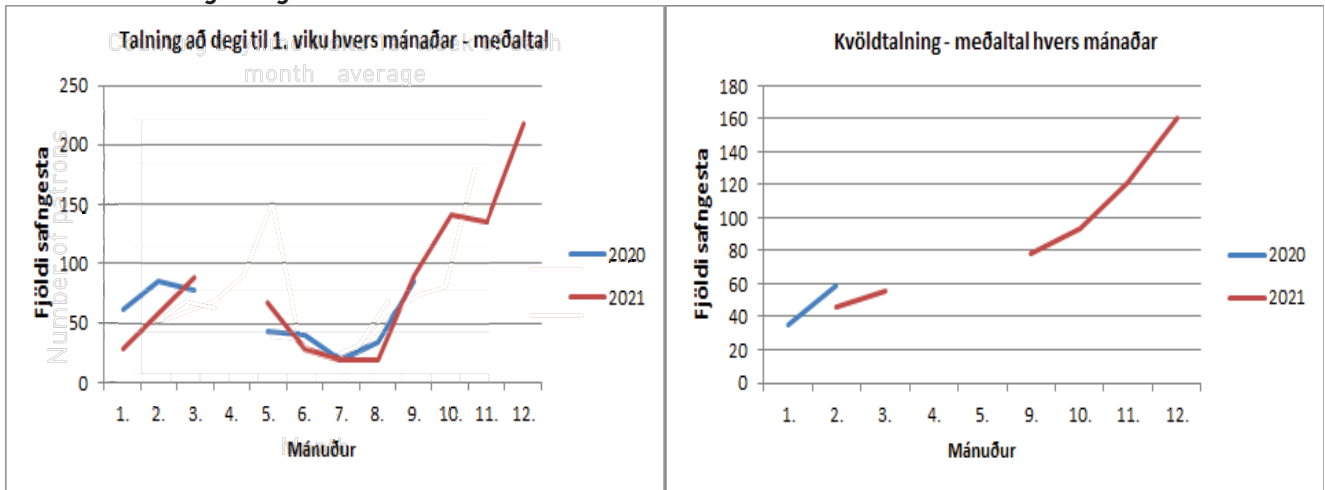
2.10 Rent of reading rooms (months)

	2018	2019	2020	2022
Number of months	287	305	193	247
Percentage on annual basis	59%	60%	51%	45%

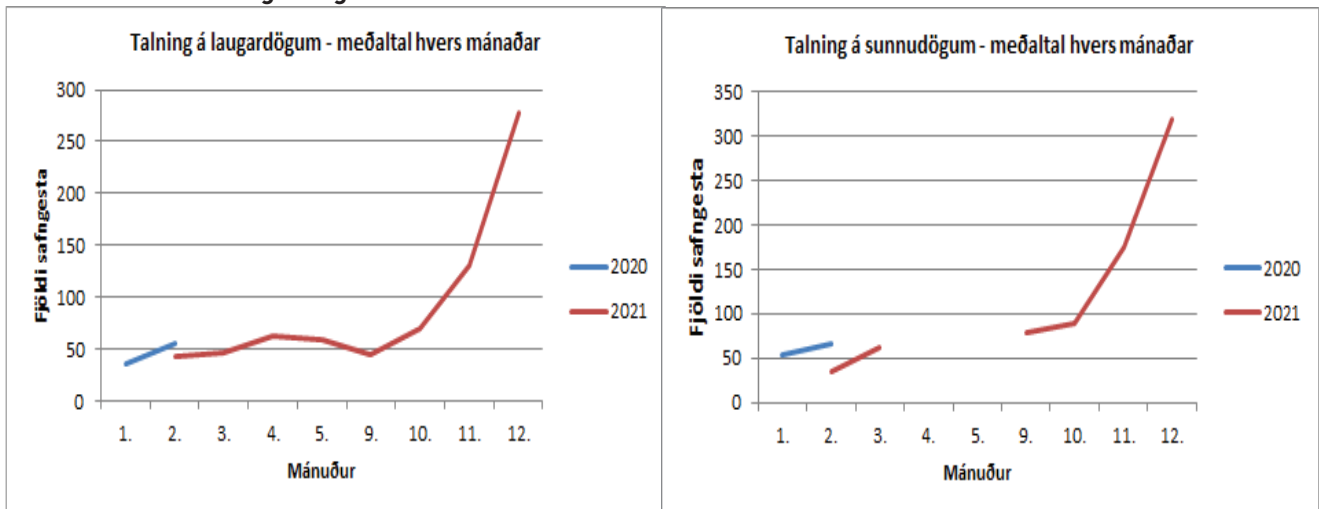
⁶ E-mails in the mailbox landsbokasafn@landsbokasafn.is and forwarded for handling. The table has been revised.

⁷ The University of Iceland now services computers for students and therefore the Library does not count their printing and scanning. Photocopying and scanning of other patrons and staff increased.

2.10 Guests using 3rd og 4th floor 2020 til 2021⁸



2.10 2.10 Guests using 3rd og 4th floor 2020 til 2021



⁸ The Library was closed because of Covid-19 in some parts of the year, but otherwise it was open 9-5, and closed in the evenings and weekends. No counting was on 2nd floor, as the space was seldom in use.

2.11 User orientation and training⁹

	2018	2019	2020	2021
UI – General presentations	36	45	18	19
UI – Basic introduction	13	22	8	9
UI - Endnote	6	12	6	5
UI – Project work			1	5
UI - Theses			4	1
EndNote introduction – doctoral students		14	1	2
Finding resources - doctoral students			1	4
Center for writing - EndNote	2	4	1	2
Center for writing – Finding resources	1	2	1	3
Long Night against Procrastination	1	1	0	0
General introductions and visits	8	6	5	0
Introductions for new students – special fields of study				1
Total	67	106	46	51
Individual assistance				
Guidance for finding resources		2	37	43
Doctoral students - EndNote		14	5	6
Doctoral students – Resource guidance				2
Total		16	42	51

2.12 Use of electronic resources and services

	2018	2019	2020	2021
Articles and bookchapters via ICES ¹⁰	1.514.617	1.656.084	2.142.257	1.677.154
Articles from Morgunblaðið	2.765.619	2.870.173	3.563.278	2.967.219
Articles via subscriptions of University of Iceland ¹¹	118.922	164.334	212.081	232.302
Bookchapters via subscriptions of University of Iceland		26.395	55.450	84.221
Guides from Áttavitinn ¹²	33.194	42.834	52.959	57.536
Articles in GOA (gold open access)	21.185	-	42.438	50.722
Total articles and chapters	4.446.061	4.769.525	6.068.463	5.096.154

2.12 Scopus

	2018	2019	2020	2021
Regular Searches	29.598	30.841	29.729	6.789
Result Clicks	22.687	28.445	33.792	104.930
Record Views	42.337	34.418	39.163	50.508

2.12 Turnitin – Usage of universities and high schools¹³

	2018	2019	2020	2021
Paper Submissions	58.283	101.937	179.326	195.780
Similarity Reports	17.558	34.652	52.694	51.175
Active Instructors	913	1.261	2.097	2.560

⁹ The table was revised in 2020, because of changes in student training. Courses and training were often canceled because of Covid-19.

¹⁰ Further information is available on the use of the national licences in the annual report of ICES on the website *hvar.is*. Numbers have been updated.

¹¹ It is difficult to get reliable figures on the use of some of the subscriptions of the University of Iceland and the data is unstable. A list of the subscriptions is on page 44 in the Icelandic version of the Annual Report.

¹² Corrected figures.

¹³ Numbers from Turnitin Feedback Studio report.

2.13 Visits and page views on NULI websites

	Visits		Page views	
	2020	2021	2020	2021
timarit.is (Newspapers and journals)	3.560.461	3.255.744	11.265.608	10.640.209
skemman.is (Dissertations – research papers)	1.880.393	1.803.186	6.187.068	5.749.012
baekur.is (Books)	150.112	122.368	345.936	371.303
ismus.is (Music and oral history)	92.914	114.203	447.794	373.340
handrit.is (Manuscripts)	88.174	79.875	441.415	429.271
inngangur.landsbokasafn.is (Intranet)	32.425	34.769	73.238	83.787
landsbokasafn.is (Main library website)	38.716	34.439	222.838	222.534
vefsafn.is (Archived web pages)	86.531	99.308	40.363	41.689
rafhladan.is (Born digital legal deposit)	47.220	58.202	140.260	133.342
hvar.is (Landsaðgangur – ICES)	25.714	12.378	50.401	54.950
hljodsafn.landsbokasafn.is (Sound archive)	16.445	17.761	179.820	140.813
hask.landsbokasafn.is (Cataloguers´ handbook)	72.502	54.571	48.621	40.440
opinvisindi.is (Repository for research articles)	14.481	11.969	123.295	88.878
jonashallgrimsson.is (The poet and scholar JH)	10.641	12.607	60.824	47.738
Áttavitinn (Study guides)	21.263	30.068	65.561	75.337
islandskort.is (Antique maps of Iceland)	22.484	27.211	42.612	41.254
kvennasogusafn.is (Womens history archive)	8.107	7.245	32.736	28.436
einkaskjol.is (Private archives)	9.457	7.229	21.179	16.362
Lykilskra.landsbokasafn.is (Keywords)	7.438	7.118	29.519	28.122
sagas.landsbokasafn.is (Saga translations)	5.446	5.958	12.279	13.786
doktor.landsbokasafn.is (Icelandic PhDs)	5.124	5.440	16.726	16.896
konurogstjornmal.is (Women and politics)	4.020	3.548	7.546	6.747
utgafuskra.is (Icelandic national bibliography)	9.660	10.968	9.015	10.747
Leikminjasafn.is (Theater Museum)	3.926	2.865	9.465	16.566
munlegsaga.is (The Center for Oral History)	1.686	1.122	4.161	2.066
bokaskra.landsbokasafn.is (Icelandic bibliogr.)	1.154	3.556	2.694	1.669
openaccess.is	2.218	3.335	2.460	6.194
hallgrimurpetursson.is (The priest and poet HP)	1.483	504	6.521	4.807
Total 28 websites	6.220.195	5.827.547	19.899.188	18.681.746

2.15 Social media - number of entries and number of followers¹⁴

	Entries 2020	Entries 2021	Followers 2020	Followers 2021
Facebook - National and University Library	219	159	3.018	3.117
Facebook - Manuscript Collections	72	50	1.527	1.595
Facebook - Music and Film Collections	15	Closed	928	Closed
Facebook - Women´s Archives	91	85	2.199	2.363
Facebook - Women and politics	0	Closed	354	Closed
Facebook - Jónas Hallgrímsson	0	Closed	150	Closed
Facebook - Music Collection	2	Closed	1.042	Closed
Facebook - Ismus	5	0	2.241	2.261
Twitter - National and University Library	1	Closed	250	Closed
Twitter - Openaccess.is	136	29	256	262
Twitter - Women´s Archives	117	165	495	583
YouTube - National and University Library	3	0	38	48
YouTube - Music Collection	0	0	93	106
Instagram - National and University Library	0	66	0	331
Total	661	488	12.591	10.666

¹⁴ The usage of social media has been experimental and requires a lot of work. The number of accounts has been reduced.

3. COLLECTIONS

3.2 Number of copies by format 2021 – processed from Gegnir (report E01)

Type of format	Manu- scripts	NULI	National collection	Branch Lögberg	Kvenna sögu	Reserve collection	Research centres	Total 2021	Total 2020
Blu-ray		384	82	1				467	419
Book	2.262	432.088	226.455	10.707		118.233	6.782	796.527	795.650
Datasets		10	9			8		27	27
CD		678	9.380	3		6.957		17.018	16.521
CD-audiobook		575	1.241			819		2.635	2.590
Manuscript	16.662			1	913			17.576	17.246
LP		4	3.982			3.249		7.235	6.981
LP-audio book		2	87			71		160	159
Bound journals	17	8.544	7.331	193		338		16.423	16.673
Maps		46	1.480			24		1.550	1.547
MP3-audio book		18	225			196		439	411
Video		1.165	992	1		15		2.173	2.170
DVD		3.920	1.452			57		5.429	5.323
Sheet music		4.447	2.836			2.202		9.485	9.411
Slides		5	22			7		34	31
Ephemera			1.075					1.075	
Cassettes		122	1.227			783		2.132	2.100
Cassette-audio		100	724			558		1.382	1.376
Games		7	61			29		97	87
Journal issues	22	26.505	20.784	1.098		17.324		65.733	63.938
Devices		3	1					4	4
Computer data		794	433	4		246	2	1.479	1.468
Computer files			4			1		5	667
Total	18.963	479.417	279.883	12.008	913	151.117	6.784	949.085	944.799

3.2.1 Stock by Units – processed from Gegnir (report E09)¹⁵

Total number of titles	2018	2019	2020	2021
Manuscript Collections	2.386	16.162	16.178	16.187
National and University Library	403.017	374.175	368.507	400.359
National Collections	168.356	175.483	178.999	181.474
The Women´s History Archives		51	102	187
Branch at Lögberg	9.331	9.368	9.130	9.034
Reserve collections	104.207	108.296	111.523	115.482
Research Centres of UI	5.372	5.433	5.497	5.577
Total	692.685	688.968	689.936	728.300
Total number of copies				
Manuscript Collections	18.885	18.930	18.948	18.963
National and University Library	498.401	498.626	485.997	479.417
The Women´s History Archives	265.520	270.236	275.653	279.883
National Collections		276	583	913
Branch at Lögberg	12.463	12.314	11.991	12.008
Reserve collections	135.741	139.505	144.844	151.117
Research Centres of UI	6.723	6.723	6.783	6.784
Total	937.749	946.610	944.799	949.085

¹⁵ Numbers from the website of Landskerfi bókasafna. Considerable weeding took place in foreign books and periodicals on 4th floor and in storages.

3.2.2 Acquisitions

Items received under legal deposit ¹⁶	2018	2019	2020	2021
Books (printed works registered as books)	4.540	4.758	4.529	4.341
Periodicals (individual issues)	3.513	5.248	3.635	4.303
Newspapers (individual issues)	6.144	5.850	5.223	3.579
Annual reports	361	215	239	89
Posters	64	40	36	0
Maps	8	3	2	4
Printed ephemera (units)	5.660	5.023	7.510	3.275
Sound recordings ¹⁷	339	267	233	304
Video tapes and DVDs ¹⁸	15	4	11	1
Audio books	25	138	306	1.919
Audio books on DVDs			55	46
Sheet music	9	238	21	37
Digital items in Skemman	2.702	2.572	2625	2.846
Digital items in Rafhlaðan	2.552	1.204	7.637	364
Digital items in Opin vísindi	468	446	893	1.267
Digital items in Hljóðsafn	4.480	4.685	3.161	6.054
Web archiving – documents (thousands)	2018	2019	2020	2021
The Icelandic web domain	311.044	291.193	289.352	251.810
Weekly selected archiving	92.723	86.665	63.702	78.961
Event-related collections	24.137	3.042	2.991	2.764
Special collection because of Covid-19			58.947	60.275
Total documents (thousands)	427.904	380.900	414.992	393.810
Other acquisitions	2018	2019	2020	2021
Books - Services and University relations	362	297	180	235
Books - National Collections	384	300	303	370
Books - University of Iceland	790	640	525	512
Books, donations/exchanges	6.100	5.206	4.471	4.560
Foreign periodicals, paid by NULI	277	195	184	159
Foreign periodicals, paid by UI	355	356	347	346
Foreign periodicals, paid by UI institutions	2	2	1	1
Foreign periodicals, donations/exchanges	190	160	140	110
Periodicals, donations of back-numbers (volumes)	183	92	106	15
Icelandic periodicals, purchased	83	99	98	83
Icelandic periodicals, donated	20	25	25	25
Sound recordings - purchased National Collection	201	263	75	109
Sound recordings, donated	331	548	1.083	412
DVDs - NULI Services and University relations	59	19	19	29
DVDs - NULI National Collections	37	46	29	36
DVDs - University of Iceland	15	3	15	0
DVDs, donations	239	135	159	55
Audio books, donations	23	18	42	24
Sheet music, donations	98	22	58	46
Annual reports, donations	21	68	2	86
Computer data, donations	2	32	43	18
Databases for NULI, UI and others ¹⁹	29	27	23	25
Acquisitions by Manuscript Collection	65	94	76	83
Acquisitions by Women's History Archive	21	16	13	29

¹⁶ Counting of the three copies of books, newspapers, audio discs and multimedia discs preserved in the Library, but two copies of printed ephemera and posters are counted. The figures for ephemera are estimates.

¹⁷ Counting of copies of published sound recordings preserved. Here also titles published by individuals, choirs, and bands.

¹⁸ Titles.

¹⁹ NULI paid for or took part in purchasing 8 databases and schools / faculties of the University of Iceland paid for other databases.

Acquisitions by Centre for Oral History	4	10	7	7
Acquisitions by Sound and Film Collection		11	13	19
Original tracks of Icelandic music – shelf meters		220	360	17
Acquisitions by Theater Museum			1	17

3.2.3 Withdrawals – processed from Gegnir (report E08)

Total withdrawn copies	2018	2019	2020	2021
Manuscript Collections	51	43	0	4
National and University Library	12.531	18.465	24.280	15.222
National Collections	2.685	4.005	1.003	1.638
Branch at Lögberg	490	402	616	28
Branch at VR II	1.644	0	0	0
Reserve copies	1.988	2.828	647	1.301
Research Centres of UI	15	45	14	3
Total	19.404	25.788	26.560	18.196

4. ACCESS AND FACILITIES

Wintertime - opening hours pr. week ²⁰	80
Summertime - opening hours pr. week	40-44
Exams time - longer opening hours for six weeks pr. year	86
Days open	320
User places - seats	700
Reading rooms for individuals	26
Work rooms for groups or meetings	4
Tables for group work	17
Public access workstations – computers and kiosk services	24
Catalogue records - Gegnir ²¹	1.269.424
Number of copies - Gegnir	5.847.255
Number of records in search machine – Leitir (titles and e-material)	2.630.000
Photocopiers, printers and scanners	16
Space in squaremetres	
- National and University Library Building	13.000.00
- Reykholt	851.40
- Storage in Mjódd	428.00

5. MANAGEMENT

5.1 Records Management

	2018	2019	2020	2021
Number of new cases in the records system	190	164	150	371

5.3 Publications

	2018	2019	2020	2021
Promotional material				
Re-issued leaflets	8	8	8	8
Guidelines in Áttavitinn ²²	16	13	12	37
Exhibition catalogs	1	2	2	1
Brochures	7	3	3	4
Total	32	27	25	50

²⁰ Opening hours were limited because of Covid-19.

²¹ Weeding and clearing because of the implementation of a new Library System in 2022, results in the reduction of titles and copies.

²² 21 Guide came from the Library in the the Scool of Education at the University of Iceland.

5.4 Conservation and binding services

	2018	2019	2020	2021
Units	22.586	25.698	16.100	16.078

5.5 Digitization – annual increase

Printed material (pages)	2018	2019	2020	2021
Newspapers and periodicals	64.277	73.409	115.323	100.969
Books	8.344	36.915	28.941	30.488
Manuscripts	21.014	37.493	31.235	39.436
Maps	0	0	0	0
Not published on the Library's websites	0	0	0	29.150
Albums and covers for the Sound Archive	5.657	5.926	999	0
Private Archives	1.487	0	200	1.223
For Rafhlaðan	0	0	0	624
Total pages	100.770	152.743	176.698	201.890
Sound material (sound files)				
Music	4.480	4.685	3.400	5.815
Interviews	253	843	0	0
Interviews – Theater Museum				239
Total sound files	4.733	5.528	3.400	6.054

5.6 ISSN and ISBN

ISSN (International Standard Serial Number)	2018	2019	2020	2021
ISSNs assigned	79	124	202	134
ISBN (International Standard Book Number)				
Registrant element ranges assigned	48	77	74	81
Individual ISBNs assigned	193	173	222	219
ISMN (International Standard Music Number)				
Registrant element ranges assigned	6	1	2	5
Individual ISMNs assigned	3	8	7	14
DOI – numbers for research articles ²³				
Individual DOIs assigned		230	494	279

6. FUNDING AND EXPENDITURE

6.2 Operating expenses (ISK '000)

	2018	2019	2020	2021
Payroll	644.286	686.367	708.962	726.517
Acquisitions	274.154	325.259	345.283	361.024
Other expenses	319.619	367.834	376.887	379.589
Total	1.238.000	1.379.460	1.431.132	1.467.130
Percentage breakdown %				
Payroll	52.1	49.8	49.6	49,5
Acquisitions	22.1	23.6	24.1	24,5
Other expenses	25.8	25.8	26.3	25,9

²³ Assigning DOI numbers (Digital Object Identifier) is a new service, and the NULI is a member of Crossref.

6.2 Division of expenses by departments

Departments	2018	2019	2020	2021
Acquisitions and metadata	20.0%	20.0%	15.5%	20,1%
Administration and IT	34.5%	34.5%	33.2%	31,7%
National collections and digital conversion	15.9%	15,2%	16.5%	16,1%
Information and services	29.6%	29.6%	34.8%	32,1%
Total	100.0%	100.0%	100%	100%

6.3.3 Income statement (ISK ´000)

Income	2018	2019	2020	2021
University of Iceland's allocation for acquisitions	41.018	36.340	34.969	39.281
Icelandic Consortium for Electronic Subscriptions (ICES)	128.652	123.841	145.644	134.049
Other income	82.997	113.558	141.301	155.498
Government appropriation	1.032.145	1.088.233	1.070.900	1.070.700
Total	1.284.812	1.361.972	1.392.805	1.399.528
Expenses	2018	2019	2020	2021
Payroll	644.286	686.367	708.962	726.517
Operation and maintenance of buildings and premises	165.009	175.926	182.997	188.563
Purchase of acquisitions	76.916	98.837	103.290	106.198
Icelandic Consortium for Electronic Subscriptions (ICES)	197.238	226.422	241.992	254.826
Systems (Consortium of Icelandic Libraries. etc.)	26.514	27.175	29.500	30.658
Operation of computer systems and technical equipment	40.124	45.640	46.840	44.120
Other expenses	87.972	118.093	117.551	116.248
Total	1.238.059	1.379.460	1.431.132	1.467.130
Operating surplus	46.753	-17.488	-23.294	-67.602

7. LIBRARY STAFF

7.2 Average full-time equivalent staff per unit

Average full-time equivalent staff per unit	2018	2019	2020	2021
Acquisitions and metadata	21.30	20.75	20.35	20.65
Administration and IT	12.80	13.60	12.80	12.80
National collections and digital conversion	19.43	18.63	18.33	19.52
Information and services	18.60	18.20	18.10	19.04
Total FTE's	72.13	71.18	69.58	72.01
Personnel by category FTE's				
Qualified librarians	28.25	28.00	26.90	26.90
Librarians with university degrees	22.90	24.15	23.95	24.80
Other librarians	9.00	9.50	9.50	10.58
Assistants and office staff	4,08	3.08	3.08	3.58
Other staff	7.90	6.45	6.15	6.15
Total FTE's	72.13	71.18	69.58	72.01

Gender analysis

Library staff	2018	2019	2020	2021
Males	32	30	28	30
Females	47	48	49	49
Total	79	78	77	79
Library staff – FTE´s				
Males	29.80	28.65	26.65	27.87
Females	42.33	42.53	42.93	44.14
Total	72.13	71.18	69.58	72.01
Library staff – paid courses / conferences				
Males			2	1
Females			16	3
Total			18	4
Registered borrowers				
Males	4.547	4.785	6.618	4.944
Females	8.394	9.176	13.149	10.122
Unspecified, institutions, companies	133	122	130	105
Total	13.074	14.083	19.897	15.171
Interlibrary lending and article services				
Males	570	618	512	515
Females	807	697	559	561
Unspecified, institutions, companies	232	163	136	112
Total	1.609	1.478	1.207	1.188
Guests in reading room on 1st floor				
Males	2.766	2.376	1.473	1.997
Females	1.126	1.068	529	814
Total	3.892	3.444	2.002	2.811
Rent of reading rooms (months)				
Males	112	115	65	100
Females	175	189	128	174
Total	287	304	193	274
Topics of exhibitions				
Males	1	4	3	4
Females	3	3	4	2
Unspecified, things, institutions, etc.	5	2	2	5
Total	9	9	9	11
Lecturers at seminars				
Males	19	8	3	8
Females	22	20	7	8
Total	41	28	10	16
Highlight of the month on Library website				
Males	5	7	7	6
Females	2	2	3	4
Unspecified, things, institutions, etc.	5	3	1	2
Total	12	12	11	12

